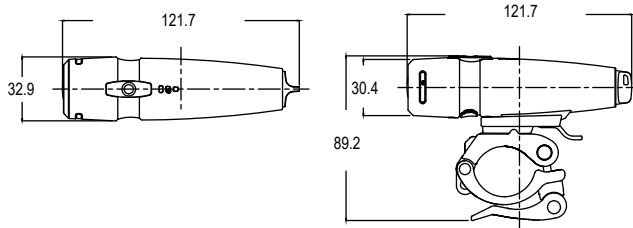


LF-11 USER MANUAL

Thank you for choosing bike light
Please read user manual before use

Product features:

- Bright CREE LED
- Long lasting Li-Ion battery (>4hrs)
- Side lights
- Easy mounting with supplied bracket



Low power indicator

When the light turns red, it shows that the battery is about to run out. Please recharge it on time.
Warning: battery can get damaged when stored empty.

Battery charging

Open the USB cover found at the bottom of the light and connect with a power supply (power bank) by USB cable. When the green light stops flashing, it indicates that charging is complete.

Indicator light color

Low power Charging Charge completed

Red Green flash Green

Product specifications

Battery: Premium Li-ion Battery
function: Full / Half / flash / SOS
Battery capacity: 2200mAh
Run time: 11 hours for half mode / 6 hours for full mode
Lumen: 300 lumens
Size: 121.7x32.9x89.2mm
Net weight: 121g (including battery)
Material: ABS, PMMA, Aluminum
Anti-glare: Yes
Voltage: 3.7V

